



PT Humpuss
Maritim Internasional

www.humi.co.id



WE ARE...

PT HUMPUSS MARITIM INTERNASIONAL (HUMI), previously named PT MISI Utama Internasional was officially established on September 20, 2016 based on the Notarial Deed of Martina SH.

HUMI as subsidiaries of PT Humpuss Intermoda Transportasi Tbk. (HITS) and HUMI merged with other subsidiaries and this resulted the consolidation of existing resources from several subsidiaries into one entity in order to utilize the optimally.

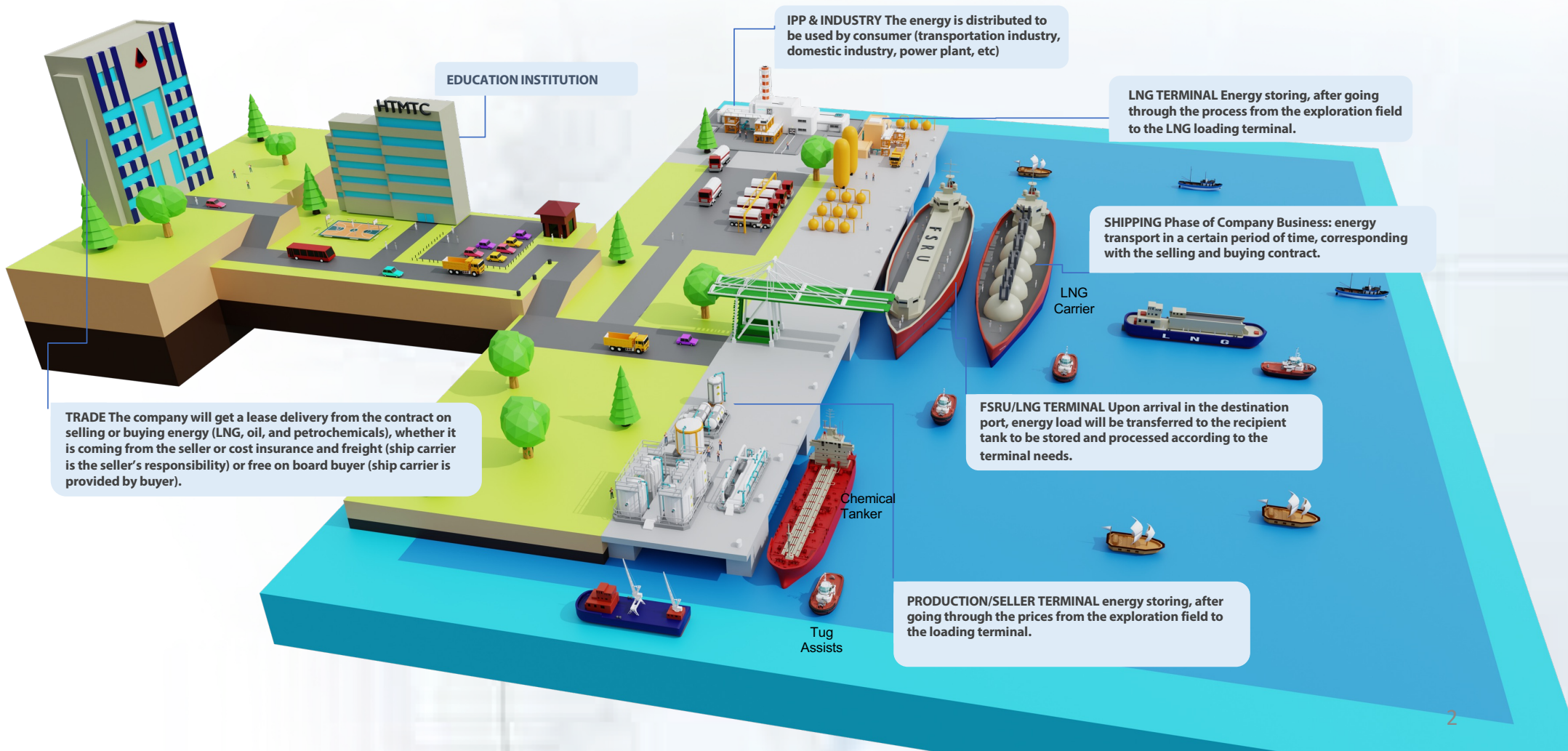
VISION

Become a leading Indonesian Company in energy distribution and infrastructure sector as well as being a major part in carrying out the operations of the port an maritime ecosystem

MISSION

To run an integrated energy distribution and infrastructure business including the port ecosystem based on the principles of good corporate governance, ensuring reliable service to customers, implementing international, environmental and social standards of safety and health that providing benefit to stakeholders in a sustainable manners.

CHAIN OF BUSINESS ACTIVITIES



LNG TRANSPORTATION

LNGC EKAPUTRA 1

LNG transportation serves PT Pertamina (Persero) using Ekaputra 1 vessel with a length of 290 meters and a size of 137.000 m³ or CBM, built by Mitsubishi Heavy Industries Ltd. in Nagasaki, Japan and had been chartered since January 10, 1990. Now, Ekaputra 1 LNG ship is delivering Liquefied Natural Gas cargo from Tangguh to several ports in West area of Indonesia.

LENGTH 290 Meters	CAPACITY 137.000 m ³ or CBM
--------------------------------	---

LNGC TRIPUTRA

HITS has an LNG transport service namely Triputra with capacity of 20.000 DWT with a length of 150 meters that serves PT Pertamina (Persero) and PT Pelindo Energy Listrik (PT PEL)—a subsidiary of Pelindo III—to transport gas for mini power plant in Bali with capacity of 250 MW. The contract for 7 years to transport gas from Bontang to Bali, which begins in 2016.

LENGTH 151 Meters	CAPACITY 23.000 m ³ or CBM
--------------------------------	--



OIL TRANSPORTATION

VESSEL NAME	CAPACITY	BUILT YEAR
MT Griya Cirebon	38.849 DWT	2001
MT Giya Jawa	16.583 DWT	2000
MT Semar 77	18.050 DWT	2001
MT Griya Enim	18.010 DWT	2000



PETROCHEMICAL TRANSPORTATION

Chemicals and petrochemicals transportation services with a captive market for the transport of chemicals and methanol. Revenues are obtained from PT Pertamina (Persero) for the distribution of LPG and PT Humpuss for transportation of methanol from PT Kaltim Methanol Indonesia cargo.

Petrochemical transportation fleet includes Griya Melayu, Jabbar Energy and Griya Bugis. In view of the market opportunities and potentials in the field of petrochemicals transport in line with the increasing needs of domestic methanol.

LPG/C JABBAR ENERGY

LENGTH
99,97
Meters

CAPACITY
3.847
m³ or CBM

MT GRIYA MELAYU

LENGTH
98
Meters

CAPACITY
4.990
m³ or CBM

MT GRIYA BUGIS

LENGTH
92.50
Meters

CAPACITY
3.989
m³ or CBM

MT GRIYA TERNATE

LENGTH
108,02
Meters

CAPACITY
7.477
m³ or CBM



OFFSHORE *SUPPORT* VESSEL

VESSEL NAME	POWER	BUILT YEAR
TB Semar 81	4.400 HP	2012
TB Semar 82	4.400 HP	2012
TB Semar 83	4.400 HP	2012
TB Semar Empat	2.060 HP	2005
TB Semar Tujuh	2.060 HP	2004

VESSEL NAME	POWER	BUILT YEAR
TB Semar Limabelas	2.060 HP	2004
TB Semar Tujuhbelas	2.060 HP	2005
TB Semar Delapanbelas	2.060 HP	2010
TB Semar Sembilanbelas	2.060 HP	2011
TB Semar Duapuluh	2.060 HP	2011
TB Semar Duapuluhtiga	2.060 HP	2013



SHIPPING MANAGEMENT

VESSEL NAME	TYPE OF VESSEL	CAPACITY	OWNER	TRADING
LNGC Ekaputra 1	LNG	137.000 CBM	PT Hikmah Sarana Bahari	Bontang - Japan
LNGC Triputra	LNG	23.000 CBM	PT Bhaskara Inti Samudera	Bontang - Bena
LNGC Surya Aki	LNG	10.599 DWT	MCGC International Ltd.	Bintulu – Japan - Russia
FSRU Jawa Satu	FSRU	170.000m3	Jawa Satu Regas	IPP



MARINE SUPPORT

VESSEL NAME	POWER	BUILT YEAR
TB Semar Enambelas	1.658 HP	2005
TB Semar Tujuhbelas	1.658 HP	2005
TB Semar Delapanbelas	1.658 HP	2010
TB Semar Sembilanbelas	1.658 HP	2012
TB Semar Duapuluh	1.658 HP	2012
TB Semar Duapuluhsatu	1.658 HP	2012
TB Semar Duapuluhdua	1.658 HP	2012

VESSEL NAME	POWER	BUILT YEAR
TB Semar Duapuluhtiga	1.658 HP	2012
TB Semar Duapuluhempat	1.658 HP	2012
TB Semar Duapuluhlima	1.658 HP	2012
TB Semar Duapuluheenam	1.658 HP	2012
BG Box Sembilanbelas	300 Ft	2005
BG Box Delapanbelas	300 Ft	2010
BG Box Duapuluh	300 Ft	2012



HUMAN CAPITAL DEVELOPMENT

TYPE OF VESSELS

- | | |
|--------------|----------------|
| ▪ LNG | ▪ Harbour Tug |
| ▪ Oil | ▪ Tug & Barge |
| ▪ Chemical | ▪ Pilot Boat |
| ▪ Cable Ship | ▪ Mooring Boat |
| ▪ LPG | ▪ Dredging |

TYPE OF CERTIFICATES

- | | |
|--------|------------------|
| ▪ BOCT | ▪ SDS |
| ▪ BLGT | ▪ IMDG CODE |
| ▪ AOT | ▪ MEFA |
| ▪ ACT | ▪ MC |
| ▪ ALGT | ▪ IGF BASIC |
| ▪ SSO | ▪ IGF ADV |
| ▪ CCM | ▪ SPECIFIC ECDIS |
| ▪ SAT | |



SUSTAINABILITY DEVELOPMENT

We Maintain OHS

The implementation of occupational health and safety standards to our ground employees and crews.



We Protect Marine Ecosystem

Serving by prioritizing the service and operation excellence, HUMI comply with the applying environmental regulations , target and program formulation, evaluation of all environmental programs, as well as internal and external audits to implement Environmental Management System.



We Learn

Improving quality Human Resources while giving opportunities to HUMI employees to realize the best potentials for advancing the Company.



We Comply

HUMI is committed that in every decision making and in carrying out an action, it will respect the ethics/moral values against applying regulations and invite every stakeholder to join the effort



COMPANY HEAD OFFICE & SUBSIDIARIES



PT Humpuss
Maritim Internasional

PT Humpuss Maritim Internasional
Mangkuluhur City Tower One 27th Floor
Jl. Jend. Gatot Subroto Kav. 1-3
Jakarta 12930, Indonesia
Phone : 62-21 509 33 159
E-mail : corpsec@humi.co.id

PT GTS Internasional Tbk.
PT Humolco LNG Indonesia
PT Hikmah Sarana Bahari
PT Bhaskara Inti Samudera
PT Permata Khatulistiwa Regas
PT Anoa Gas
PT Sulawesi Satu Regas

PT PCS Internasional
PT Utama Trans Kencana
PT Utama Trans Kontinental

PT OTS Internasional
PT Baraka Alami Sari
PT Hummingbird Trans Ocean

Mangkuluhur City Tower One 26th Floor
Jl. Jend. Gatot Subroto Kav. 1-3
Jakarta 12930, Indonesia

PT Humpuss Transportasi Curah
Mangkuluhur City Tower One 27th Floor
Jl. Jend. Gatot Subroto Kav. 1-3
Jakarta 12930, Indonesia

PT MCS Internasional
Granadi Building 5th Floor - South Wing
Jl. HR Rasuna Said Block X-1 Kav. 8-9
Jakarta 12950, Indonesia
Phone : +62 21 525 4335
Fax : +62 21 5296 4555
E-mail : crewing@mcs-internasional.co.id
Website : www.mcs-internasional.com

PT ETSI Utama Maritim
Humpuss Trilogi Maritime Training Center
Universitas Trilogi 4th Floor
Jl. Taman Makam Pahlawan No. 1
Kalibata - Jakarta, Indonesia
Phone : +62 21 798 1366 - 212 79521
E-mail : htmtc@mcs-internasional.com
Website : www.humpustrilogi.com

AGENCY

BONTANG
Akbar Hotel 2nd Floor
Jl. Imam Bonjol No. 1
Bontang 75321, East Kalimantan
Phone : +62 548 277 31
Fax : +62 548 276 83
E-mail : bontang-agency@htc.co.id

GRESIK
Jl. Pahlawan No. 50
Kel. Telogo Bendung, Kec. Gresik
East Java, Indonesia
Phone : +62 31 399 217 87
E-mail : gresik-agency@htc.co.id